

Letter from the Executive Director

Dear CDE Community,

As we reflect on the first half of our fiscal year, the Center for Digital Equity (CDE) continues to make transformative strides in advancing digital equity across our community. Your unwavering support and collaboration have fueled our mission to ensure every resident has access to the tools, skills, and opportunities necessary to thrive in today's connected world.

Progress Highlights

1. Disaster Response and Digital Equity

Hurricane Helene's devastating impact on our region underscored the critical need for digital access during emergencies. CDE responded rapidly, deploying over 200 devices to support impacted communities, enabling access to emergency resources, and connecting residents to vital information. Our efforts reinforced the essential role of digital tools in disaster preparedness and recovery.

2. Digital Inclusion Week 2024

October's Digital Inclusion Week brought fresh energy to our initiatives, showcasing the collective power of collaboration. From collaborating with E2D to support distributing eero routers and repairing laptops to hosting panels on cybersecurity and accessibility, our events engaged hundreds of residents, providing hands-on support and amplifying awareness of the digital divide.

3. Bridging Entrepreneurship and Digital Literacy

Through partnerships like R.I.S.E. with the Charlotte Regional Business Alliance Foundation and collaborations with local organizations, we've empowered aspiring entrepreneurs with essential digital resources and training. Our Digital Navigators have been connecting entrepreneurs to the tools they need to succeed, creating ripples of economic empowerment across our community.

4. Expanding Device and Connectivity Access

In collaboration with E2D and community partners, we've distributed over 2,000 laptops this year alone. Our team also supported initiatives like Access Charlotte, providing free internet access to thousands of households, ensuring that connectivity is no longer a barrier to opportunity.

5. Policy Advocacy and Ecosystem Development

Our policy initiatives are shaping systemic change. By engaging over 80 community members in listening sessions and onboarding new partners through a tiered engagement strategy, we're fostering a robust ecosystem to drive sustainable digital equity.

Looking Ahead

We're not just addressing gaps—we're building bridges to a digitally inclusive future. Here's how we're scaling our impact in the coming months:

Regional Growth: Expanding our Digital Navigator program to Gaston, Union, and Cabarrus Counties, bringing personalized support to more residents.

Workforce and Skilling Initiatives: Increasing access to digital literacy programs, with a focus on healthcare and workforce development, and logging over 20,000 digital skilling hours so far this year.

Sustained Partnerships: Strengthening collaborations with organizations like Johnson C. Smith University and the City of Charlotte to amplify our collective reach and impact.

Thank You

None of this would be possible without our community of supporters, partners, and residents. Together, we're proving that digital equity isn't just a goal—it's a pathway to a brighter, more inclusive future.

Let's continue this journey, bridging divides and opening doors for all.

In partnership,



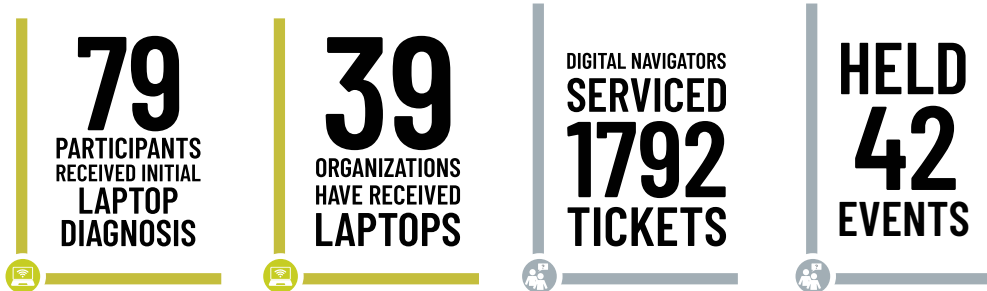
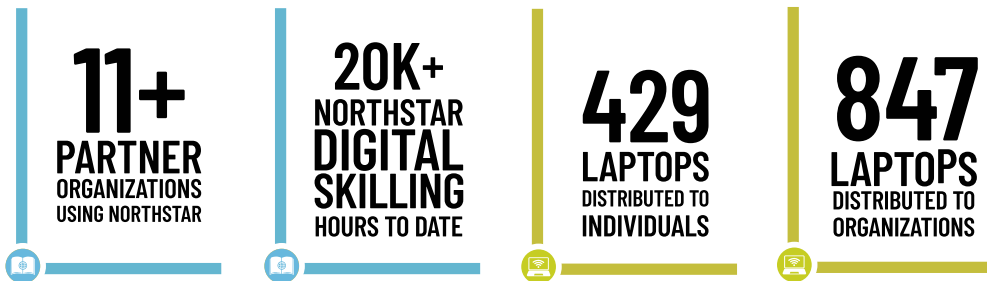
Bruce Clark
Executive Director,
Center for Digital Equity at
Queens University of Charlotte



To view the full report visit
impact.thecenterfordigitalequity.org
or use the QR code.

COLLECTIVE IMPACT
MID-YEAR REPORT FY2025

FY2025 MID-YEAR PROGRESS



WORKSTREAMS
LEGEND

-  Digital Navigation & Technical Support
-  Device & Connectivity
-  Digital Literacy & Skilling
-  Policy, Advocacy, and Ecosystem Development
-  Data, Program Measurement, and Research
-  Center for Digital Equity General



To view the full report visit impact.thecenterfordigitalequity.org or use the QR code.